

Official website: www.aryamman.in
E-mail: hr@aryamman.in
Mob: +91 98204 39351

Operational Address
B 18/19 Pravasi Industrial Estate, Off Aarey
Road, Next to Durian Estate, Goregaon
East, Mumbai - 400069.

 [aryammaninteriors](https://www.facebook.com/aryammaninteriors)

 [aryammaninteriors](https://www.instagram.com/aryammaninteriors)

DOOR WALL CABINET MATERIALS SUPPORTING PRODUCTS CATALOG

Extend the space with curves

Breaking away from convention,
no visual interruption, smooth boundaries,
easier cleaning, non-formaldehyde

Doors, walls and cabinets integrated material support services

PRODUCT INDEX

Curved line	03-06
Curved board	07-12
Display of curved lines Panel decorative effects	13-20
Wood grille	21-22
Wood grille/Finish effect display	23-24
Door, wall, cabinet color series component summary	25-26

R37 ARC LINE(IMPORTED PINE)

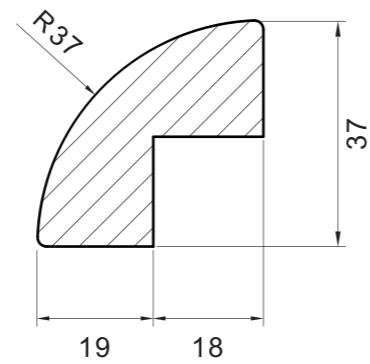


R37 ARC LINE(IMPORTED PINE)

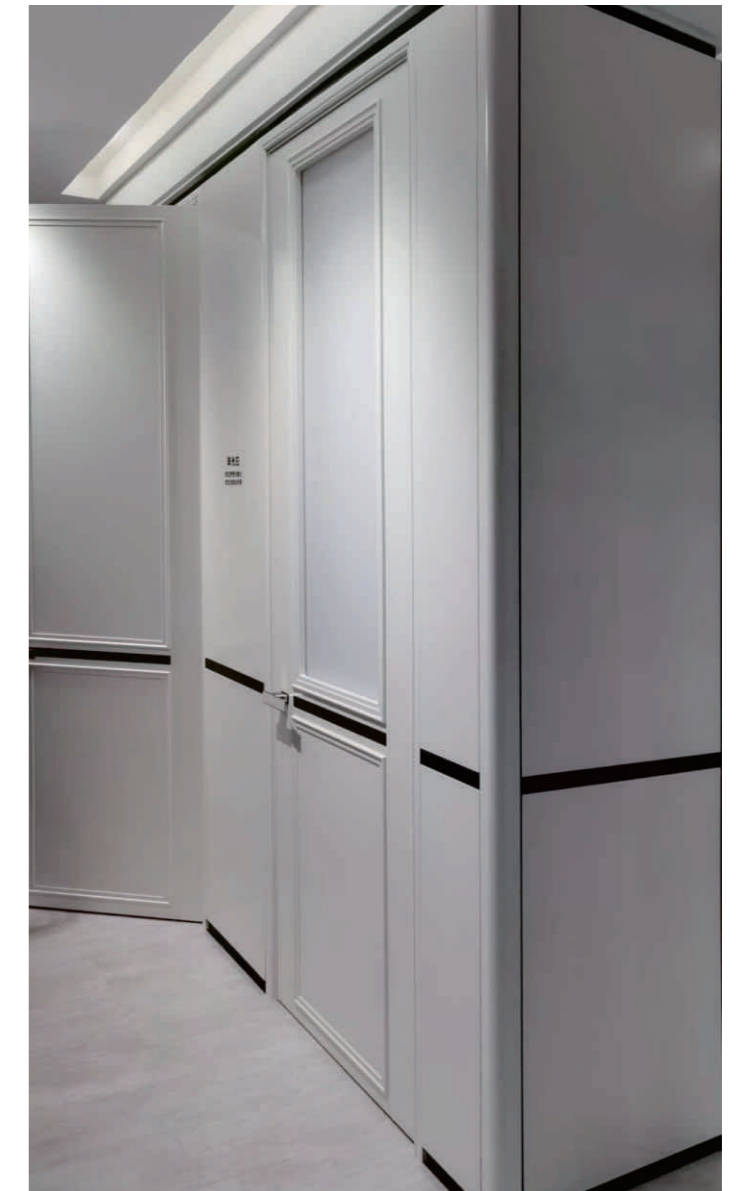
Specification: 2745xR37x18mm
Packing: 10pcs/pack

Application: Wardrobe and kitchen cabinets,
Aluminum doors, background wall and other door
and wall cabinet materials with the same color matching.

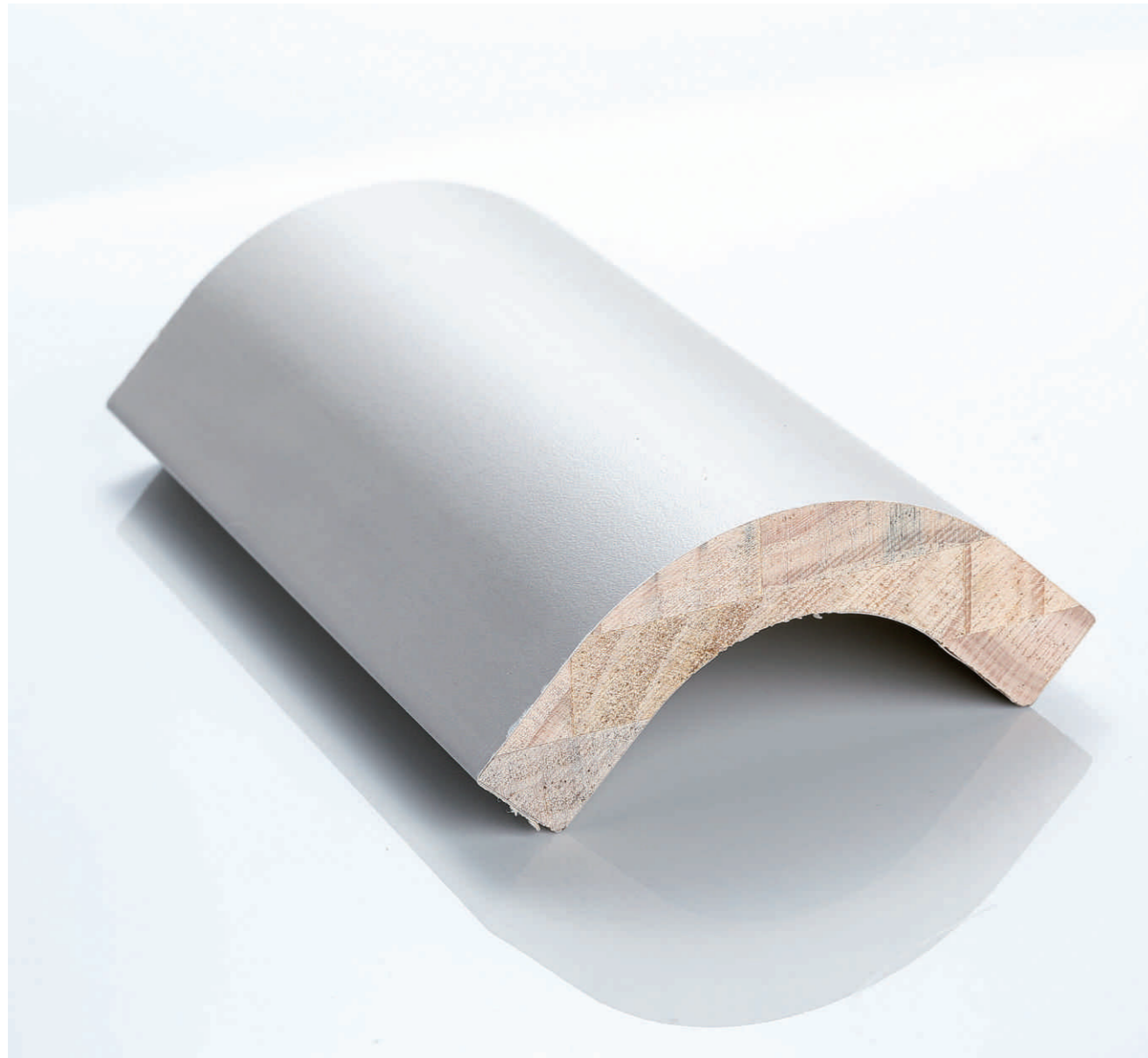
Note: Based on the outer arc



APPLICATION OF CIRCULAR ARC TECHNOLOGY



R50 ARC LINE (IMPORTED PINE)

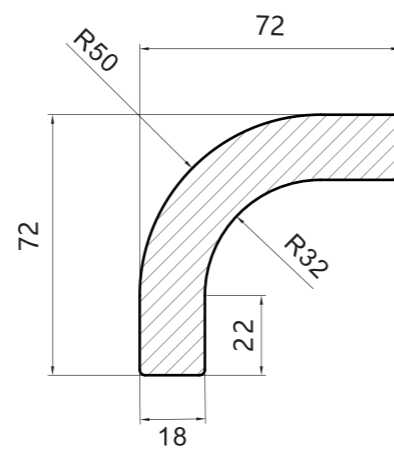


R50 ARC LINE (IMPORTED PINE)

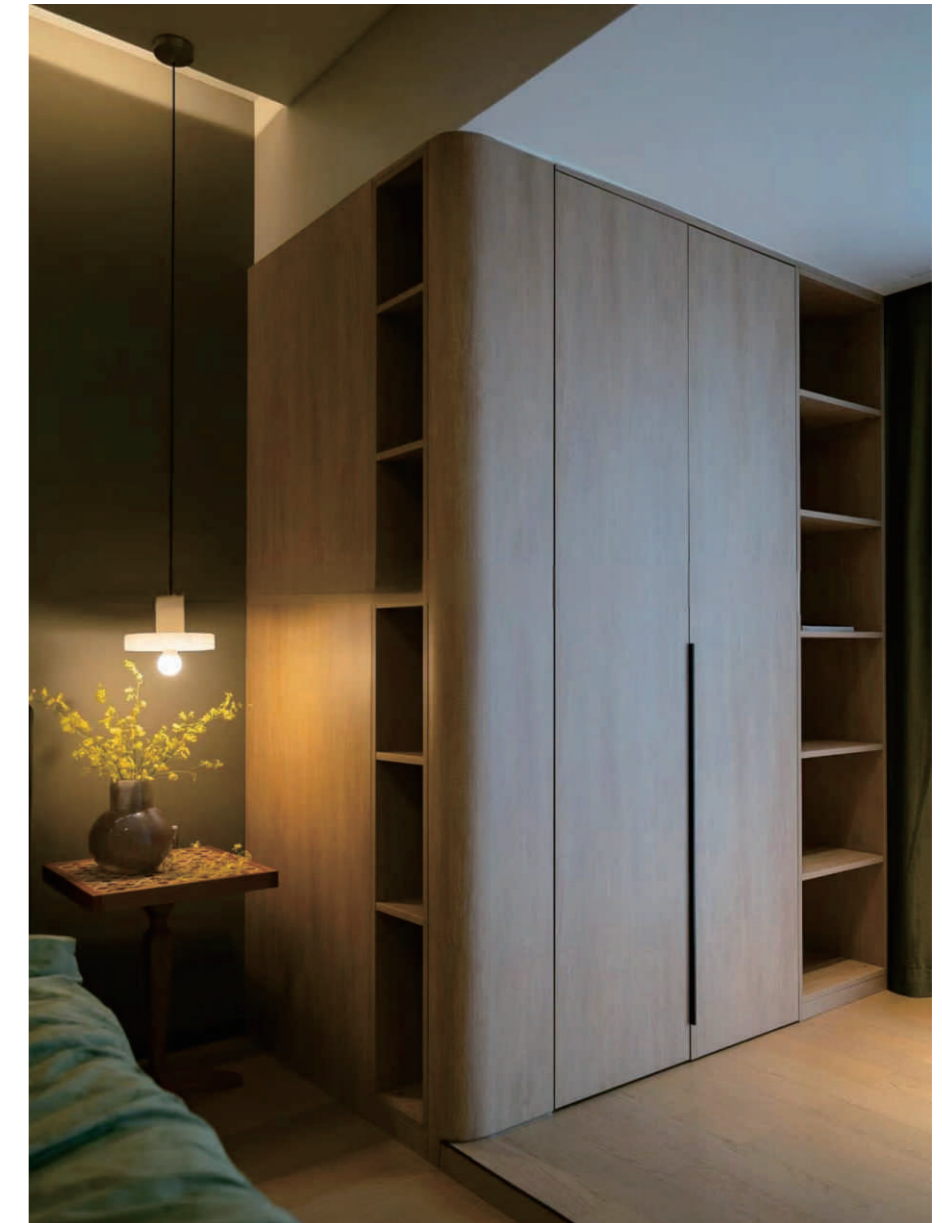
Specification: 2745xR50x18mm
Packing: 10pcs/pack

Application: Wardrobe and kitchen cabinets,
Aluminum doors, background wall and other door
and wall cabinet materials with the same color matching.

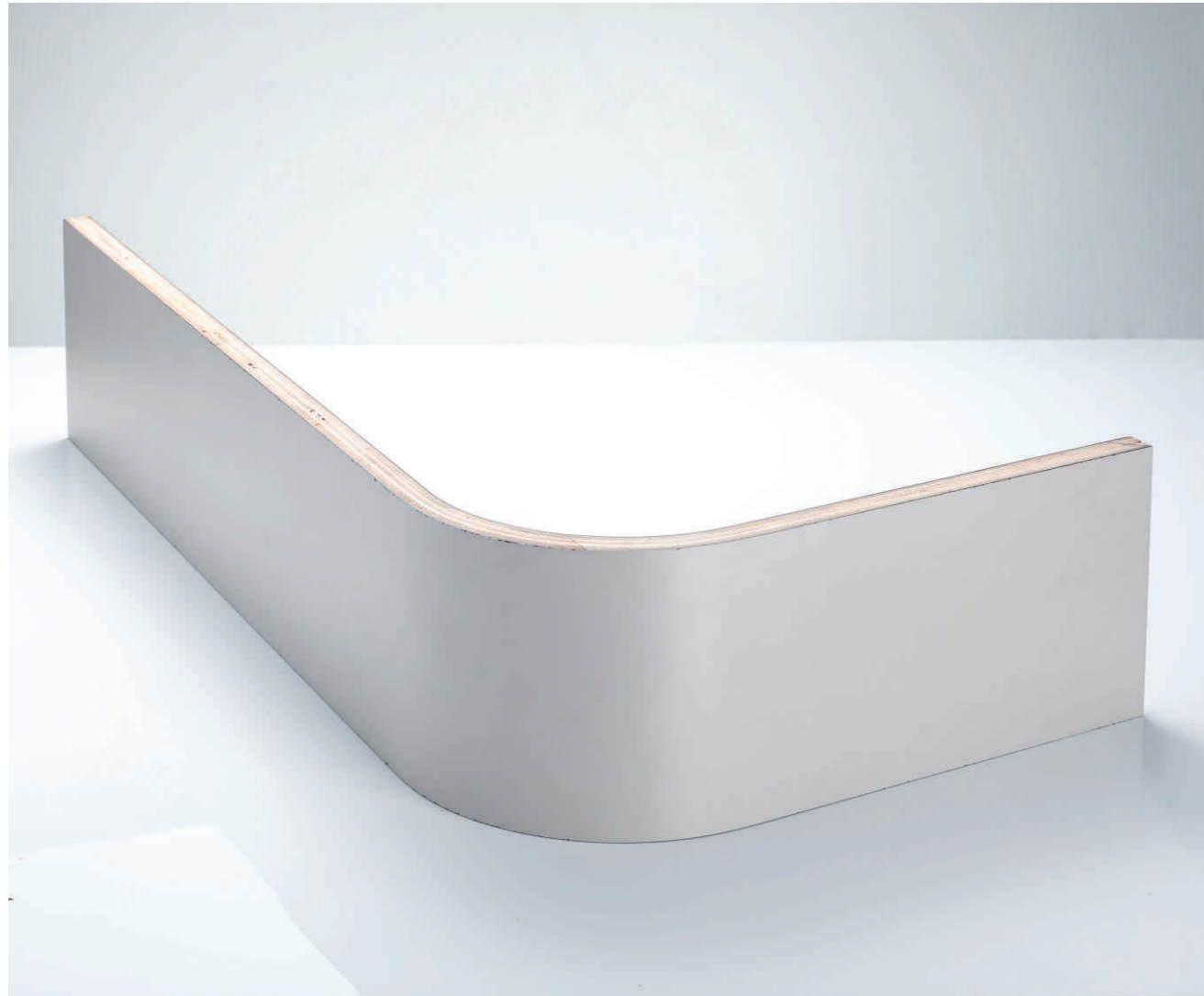
Note: Based on the outer arc



APPLICATION OF CIRCULAR ARC TECHNOLOGY



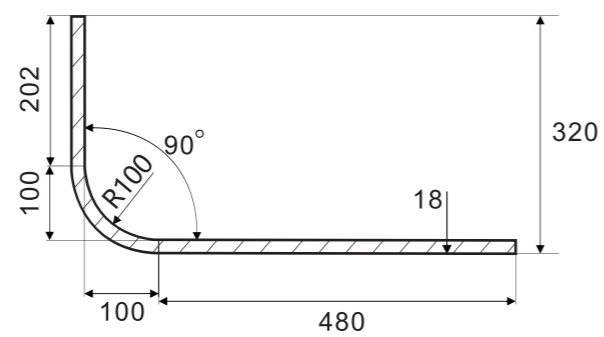
R100 Arc Panel(Plywood)



R100 Arc Panel(Plywood)

Specification: 2745x580x18mm, 2745x880x18mm

Packing: 1pcs/pack
Surface material: Triamine paper



Note: Based on the outer arc



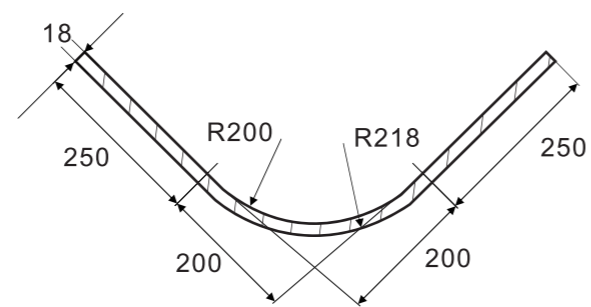
R200 Arc Panel(Plywood)



R200 Arc Panel(Plywood)

Specification: 2745x580x18mm, 2745x900x18mm

Packing: 1pcs/pack
Surface material: Triamine paper

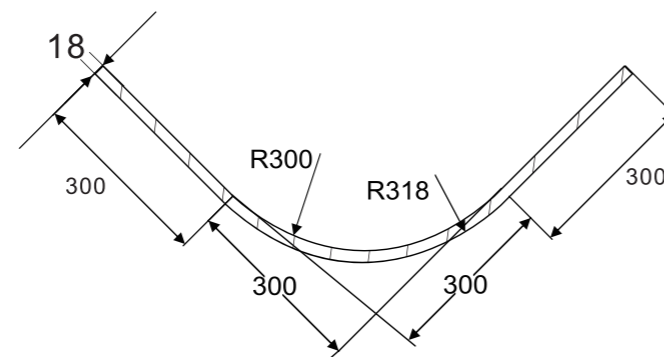
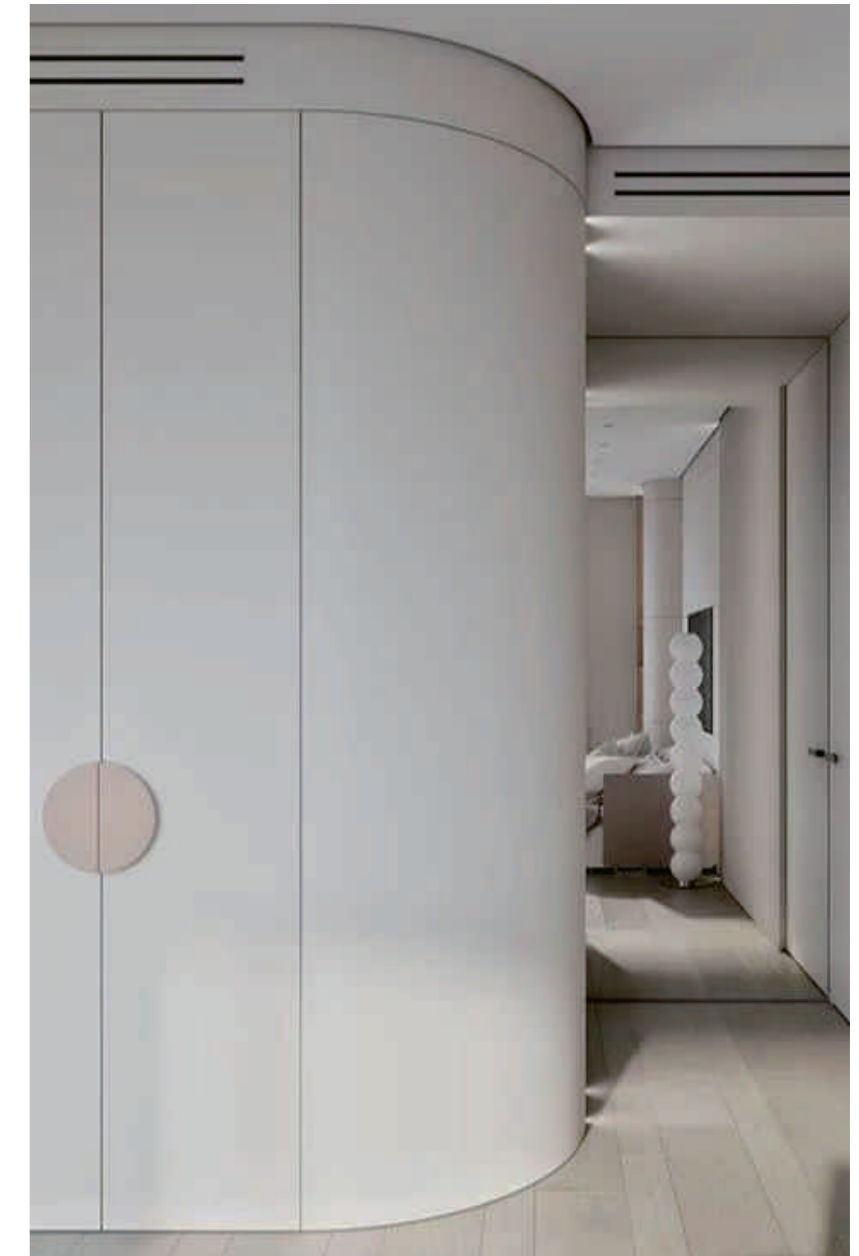


Note: Based on the outer arc

APPLICATION OF CIRCULAR
ARC TECHNOLOGY



R300 Arc Panel(Plywood)



R300 Arc Panel(Plywood)

Specification: 2745x1070x18mm

Packing: 1pcs/pack

Surface material: Triamine paper

Note: Based on the outer arc

APPLICATION OF CIRCULAR ARC TECHNOLOGY

Display of curved lines/panel decorative effects

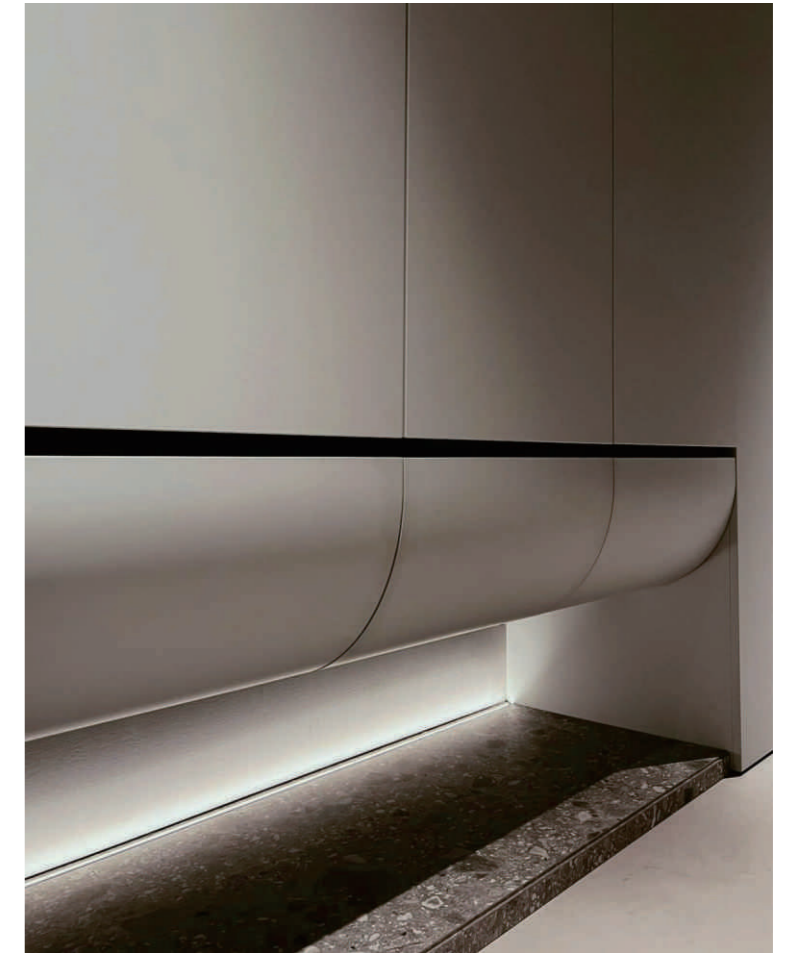


Curved elements
Grasp French style light retro
2.7 meters high
without deformation
cracking, or rebound

ARC LINE/FINISH EFFECT DISPLAY



ARC PUMPING SURFACE



Say goodbye to right angle, arc is safe and avoid bumping!
Elegant and generous, full of advanced feeling!

Display of curved lines/panel decorative effects



ARCISLAND PLATFORM

If the corner is too sharp, it is inevitable to bump.
The curved door is more elegant, and it is safer to soften the
water chestnut.
It can also increase the overall face value.



ARC LINE/FINISH EFFECT DISPLAY



ARC HANDLE-FREE DOOR



The cupboard door has no handle no sealing plate on the surface,
simple atmosphere and rounded arc.
It indicates that life will be smooth and smooth.

Display of curved lines/panel decorative effects

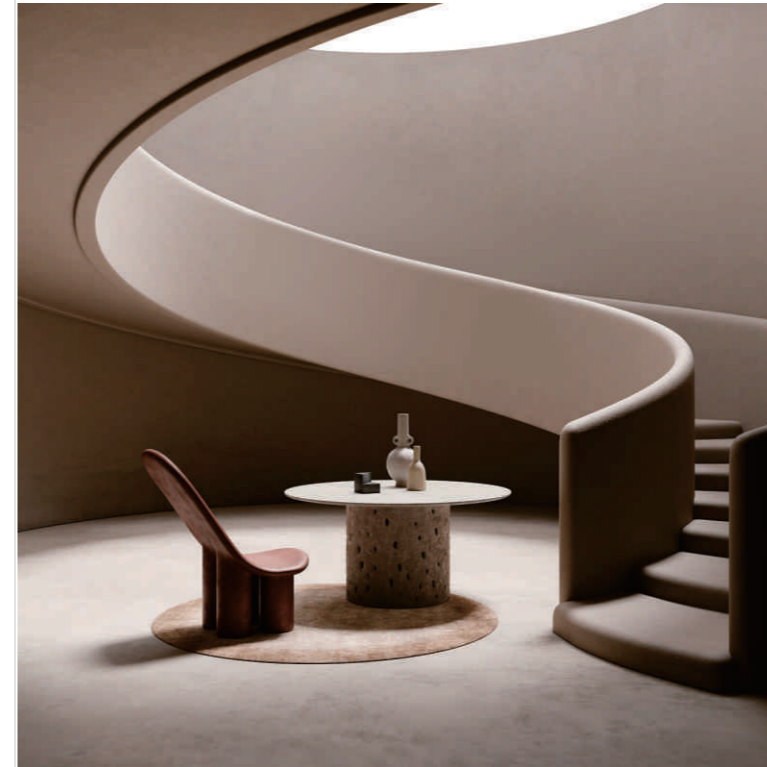


ARC YIN-YANG CORNER DOOR



Curved corners
A more gentle texture of life

ARC LINE/FINISH EFFECT DISPLAY

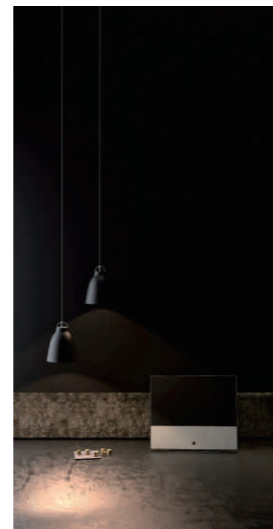


Round corner design in furniture

One is to meet the function, and the other is to meet the aesthetic needs.
For functional reasons, it is for safety.
Rounded corners play a preventive role in preventing home collision and scratches.
At the same time, it is more comfortable for the touch and vision during the use of furniture.

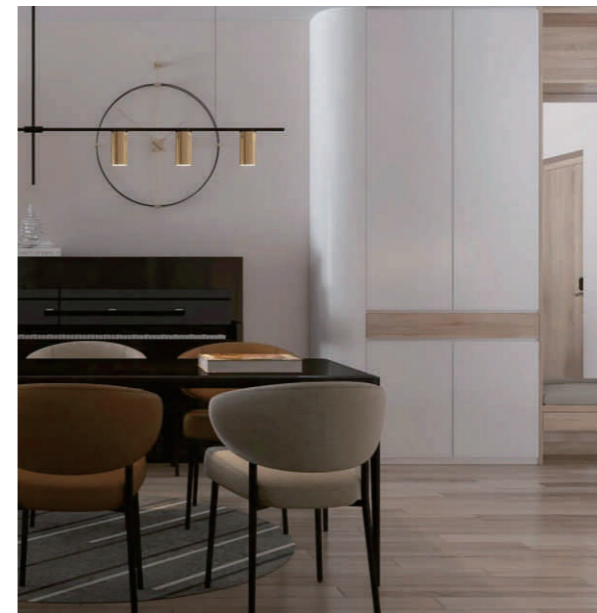


Display of curved lines/panel decorative effects



Express the extreme flow of space with the contemporary popular design language.

ARC LINE/FINISH EFFECT DISPLAY



Exquisite craftsmanship and innovative technology enrich the design, visual sense and touch of home space. It has a high-grade style like Hermes.

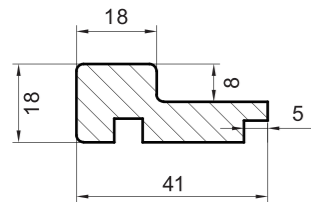


Wood grille

Product Name:
Two grid Yang angle

Specification:
2745x41x18mm

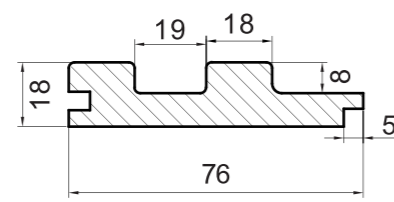
Packing:
5pcs/pack



Product Name:
Two grid grilles

Specification:
2745x76x18mm

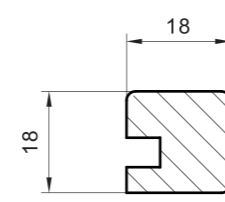
Packing:
10pcs/pack



Product Name:
Two grid buckle strip

Specification:
2745x18x18mm

Packing:
5pcs/pack



Products Specifications

Product Name: Solid Wood Grille

Material: plywood panel

Specification: Two grid Yang angle: 41x2745x18mm,
Two grid grille: 76x2745x18mm, Two grid buckle strip: 18x2745x18mm

Color: Multiple colors available

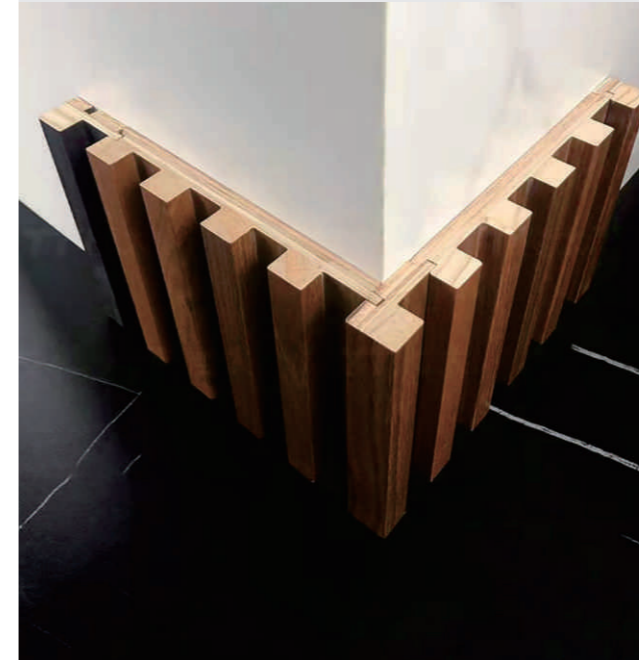
Applications: backdrops, wall decorations, suspended ceilings,
aprons, billboards and other decorations

Advantages: Moisture-proof,
healthy and environmental protection without odor,easy installation

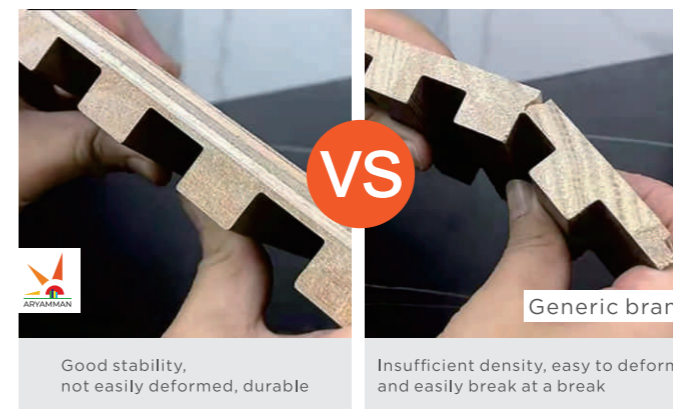
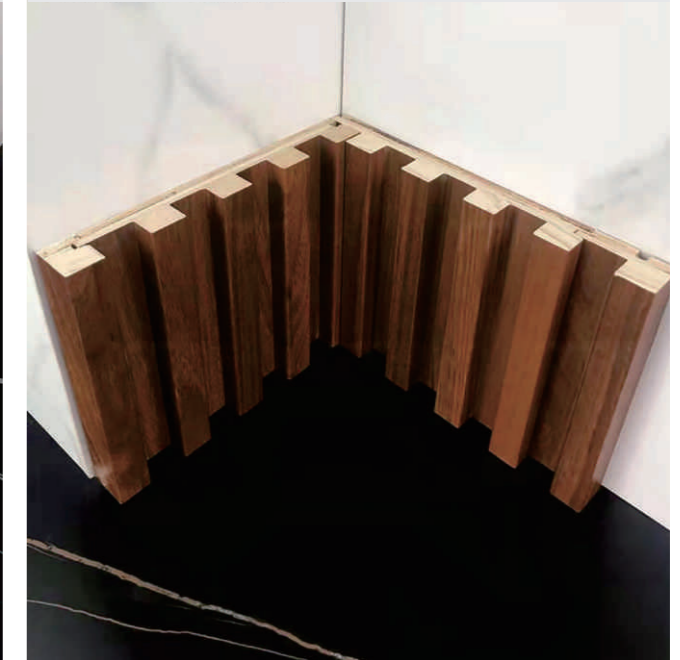


ARC LINE/FINISH EFFECT DISPLAY

Yang Angle splicing display



Yin Angle splicing display

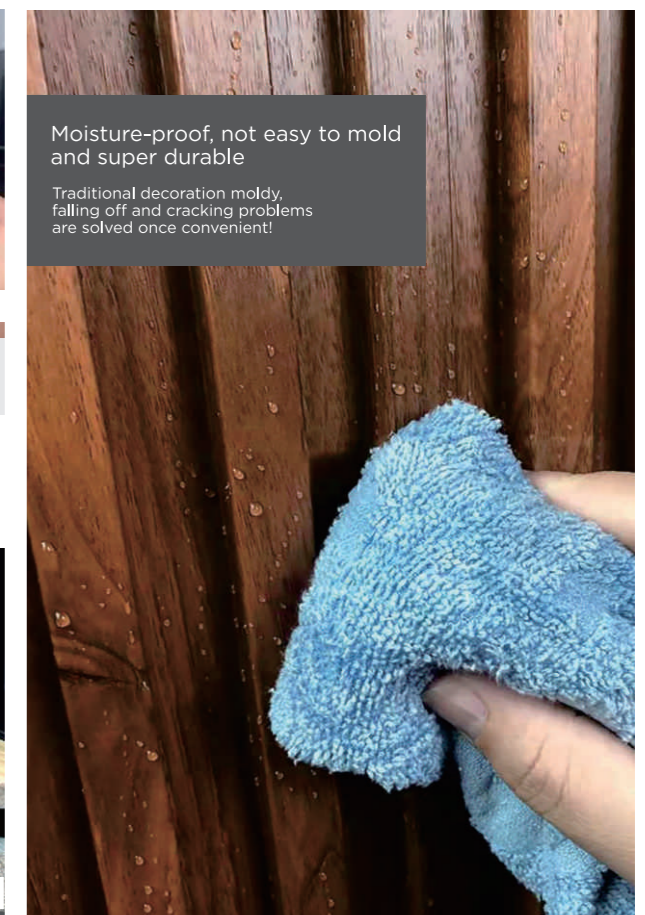
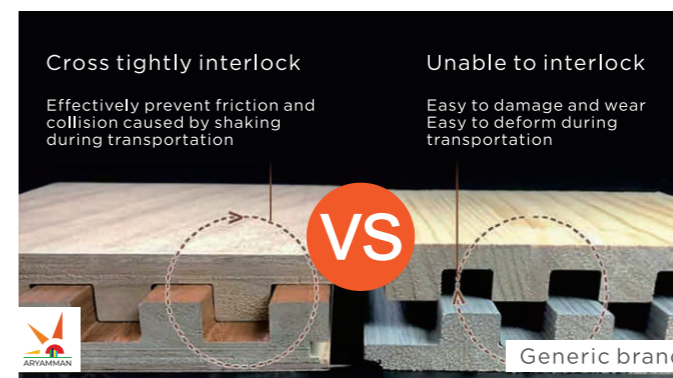


Moisture-proof, not easy to mold
and super durable

Traditional decoration moldy,
falling off and cracking problems
are solved once convenient!

Golden Ratio Design

Every detail is important to us.



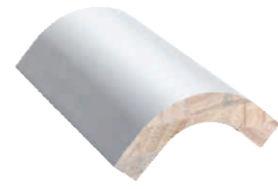
Wood grille/finish effect display



| component summary



R37 Curved line



R50 Curved line



R100 Curved door panel



R200 Curved door panel



R300 Curved door panel



Two grid Yang angle



Two grid grille



Two grid buckle strip

